
Main title of the paper submitted to SAGEO in English

Subtitle in English

First-name FAMILY-NAME¹,
First-name FAMILY-NAME²,
First-name FAMILY-NAME^{3,1}

1. Institution 1

email1

2. Institution 2

email2

3. Institution 3

email3

RÉSUMÉ. *Écrire un court résumé en français ici*

MOTS-CLÉS : *mot-clé1, mot-clé2,..., mot-cléN en français*

KEYWORDS: *key-word1, key-word2,..., key-wordN in English*

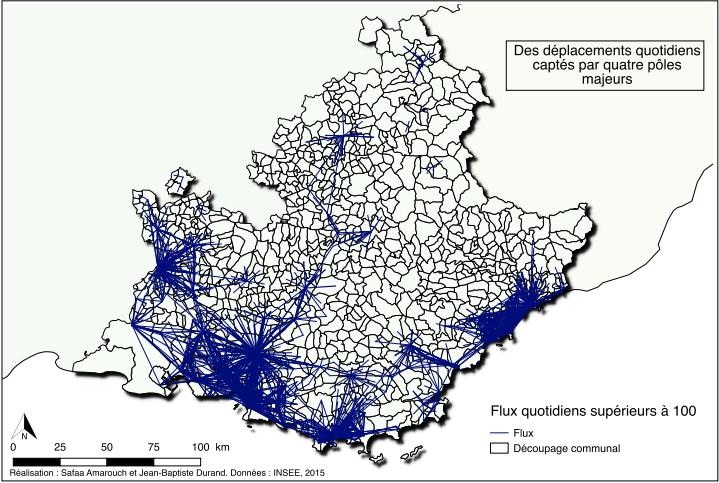


FIGURE 1. *Commuting in PACA region*

1. Introduction

Text to write (6 pages for short paper ou 12-15 pages for long paper, including the first page); author will be referenced (Reilly, 1931).

2. Section 1

Figure to be referenced (cf. map in figure 1).

3. Section 2

Formula will be presented as below:

$$a = \sin^2(\delta\phi/2) + \cos \phi_1 \cdot \cos \phi_2 \cdot \sin^2(\delta\lambda/2) \tag{1}$$

Tables will be presented (cf. Table 1) as below:

TABLEAU 1.

col 1	col 2	col 3	col 4
line 2	thing	stuff	feature

4. Conclusion

Text...

5. Acknowledgment

Text in case.

Bibliography

Reilly W. (1931). *The law of retail gravitation*. Knickerbocker Press.